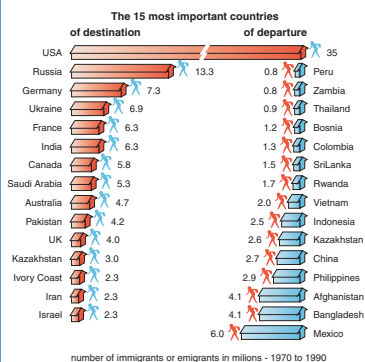


**By 2050, 85% of the world population will live in today's developing countries.**

## Immigration/emigration



Find out more

*Global financial transfers by immigrant workers to their home countries have reached 70 billion dollars per year, surpassing total international development assistance.*

- Status of Women
- Corruption
- International Solidarities

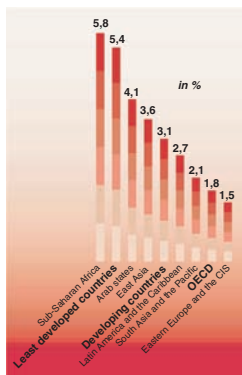
The preferred destination of emigrants remains the United States, which has not received so many foreigners since the beginning of the 20th century.

Many people leave their homes in Mexico and Bangladesh, for example, to escape poverty.

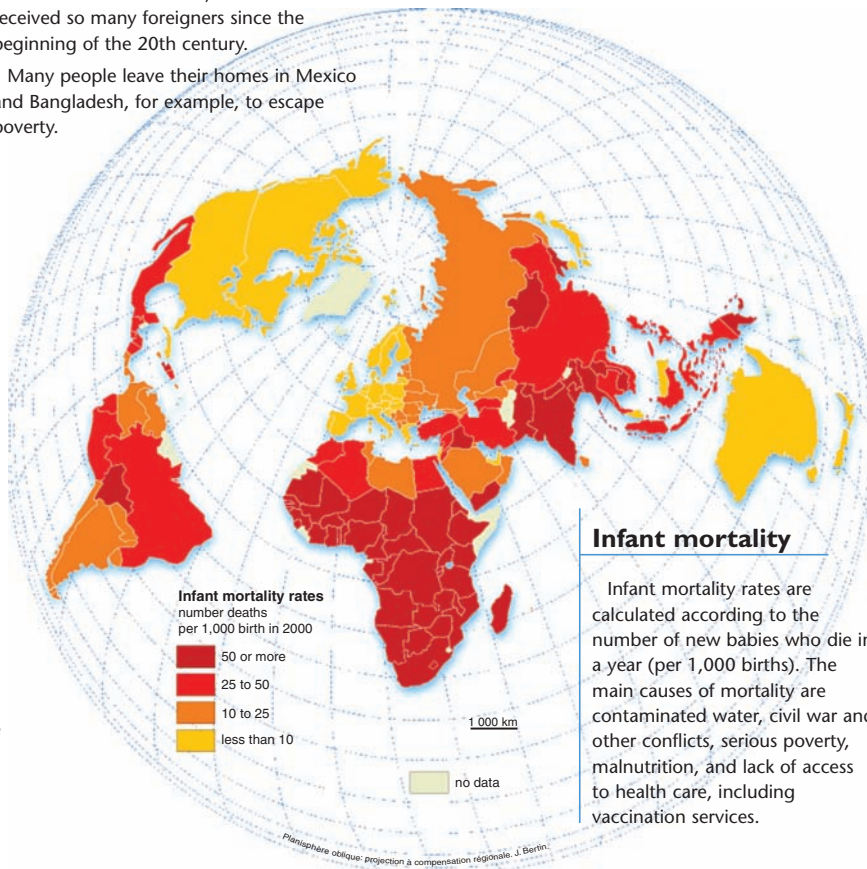
## Population growth

The global population increases by 83 million every year. 99% of this growth occurs in the poorest countries of Africa, Asia, Latin America and the Caribbean, and Oceania.

## Reproduction rates



Reproduction rates are highest in poor countries, where there is the least access to adequate health care. Mortality rates for women during birth or pregnancy are also very high, while contraception is rare (less than 15% of couples).



## Infant mortality

Infant mortality rates are calculated according to the number of new babies who die in a year (per 1,000 births). The main causes of mortality are contaminated water, civil war and other conflicts, serious poverty, malnutrition, and lack of access to health care, including vaccination services.